

CRYOGENIC SERVICE VALVE RANGE



CRYOGENIC BALL VALVES TOP ENTRY, SPLIT BODY & END ENTRY DESIGN

Poyam is the worlds leading manufactures of cryogenic ball, gate, globe and check valves. Cryogenic service valve´s main applications are focussed in LNG and LPG terminal and transportation ships.

Our valves are also the best solution for Etylene, Oxigen, Nitrogen and petrochemical plants as well.

With our own quality renowned foundry "AMPO". Poyam provides quality and experience from start to finish. Continuous in house control from casting to final -196 degree gas testing ensuring on time delivery, product quality & customer satisfaction, Poyam excel.

With committed professional engineering staff, experienced in the manufacture of high specification valves, Poyam will solve your requirements for the following Cryogenic valves:

Ball valves: Top Entry, Split body & End Entry design.

Gate valves: metal to metal & soft seated.

Globe valves: metal to metal & soft seated.

Check valves: Swing and piston (lift) type



CRYOGENIC SERVICE VALVE RANGE



American Petroleum Institute
Certificate No. 6D-0178



Certificate No. 04LA0033



BUREAU VERITAS

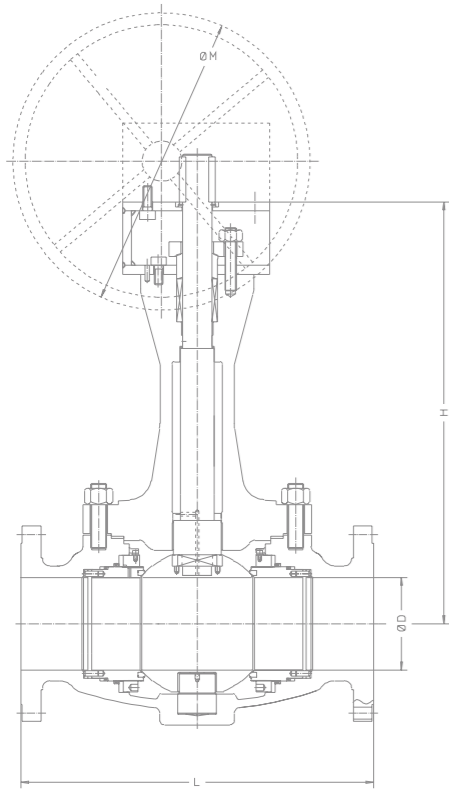


TYPE APPROVED
Certificate No. 0270026



TYPE APPROVAL

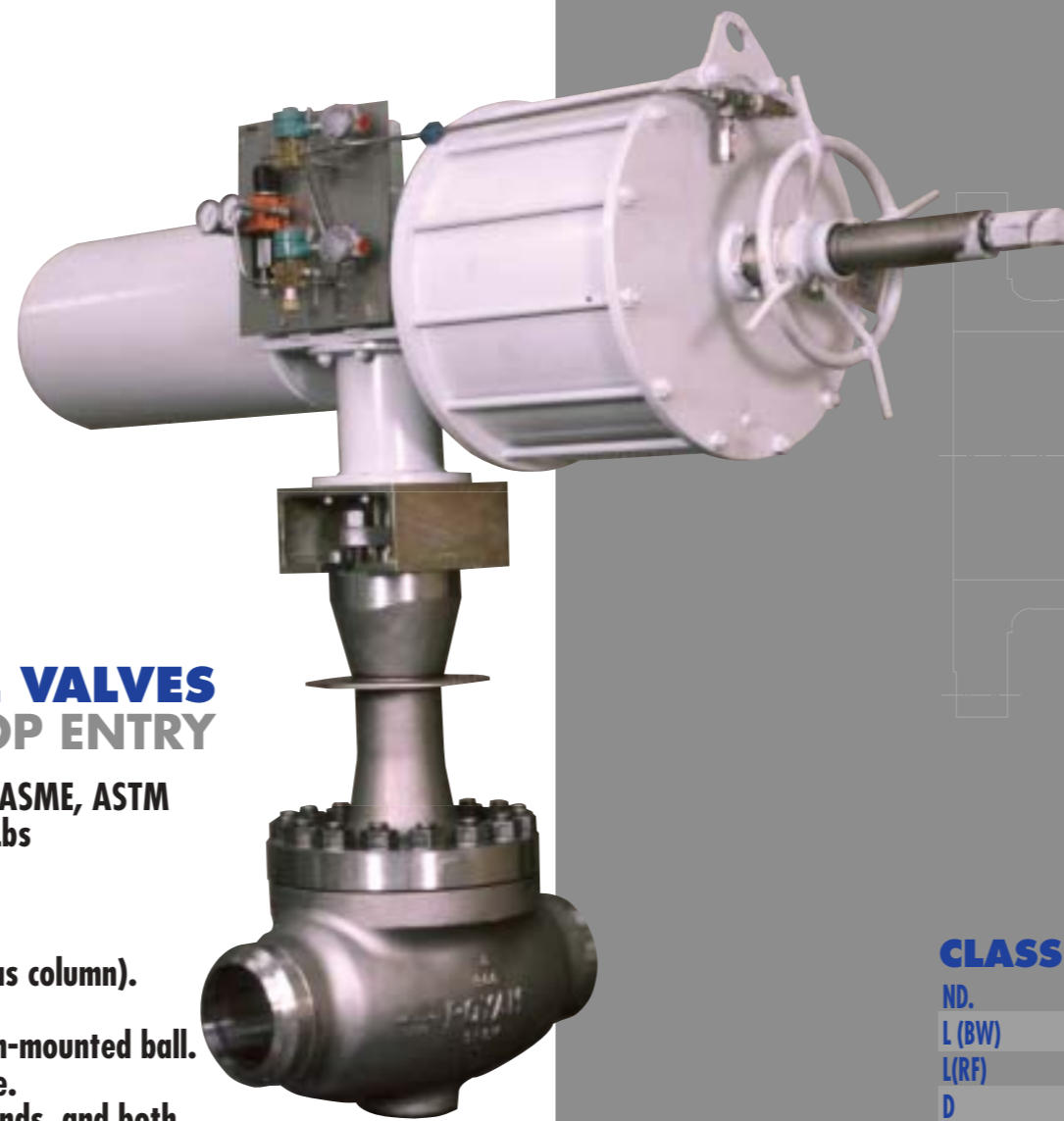




CRYOGENIC BALL VALVES TOP ENTRY

Standards: **API, BS, MSS, ANSI, ASME, ASTM**
 Classes: **150 lbs up to 2500 Lbs**
 Sizes: **1/2" up to 48"**
 Temperature: **Down to -196°C**

- Construction:
- Extended bonnet (Gas column).
 - Bolted bonnet.
 - Floating and trunnion-mounted ball.
 - Full and reduced bore.
 - Flanged, butt weld ends, and both.
 - Manual and motor-operated.
 - Fire safe.
 - Soft seats.



CLASS 600 DIMENSIONS IN MILLIMETERS

ND.	1/2"	3/4"	1"	1 1/2"	2"	3"	4"	6"	8"	10"	12"
L (BW)	165,1	190,5	215,9	241,3	320	418,8	504	632	784	916	1112
L (RF)	165,1	190,5	215,9	241,3	355,6	431,8	558,8	660,4	784	916	1112
D	15	19	25	38	50	76	102	152	204	254	305
H	327	364	385	464	523	541	652	773	932	995	1051
M	250	250	350	400	457	457	610	762	610	914	762
Weight (Kg.) (BW)	11	15	24	35	50	93	-	-	-	-	-
Weight (Kg.) (RF)	14	18	28	40	62	113	-	-	-	-	-

CLASS 150 DIMENSIONS IN MILLIMETERS

ND.	1/2"	3/4"	1"	1 1/2"	2"	3"	4"	6"	8"	10"	12"	14"	16"	18"RB	20"RB	24"RB	28"RB	30"RB	36"RB
L (BW)	39,7	152,4	165,1	190,5	215,9	282,6	393,7	457,2	623,9	754	876,3	965	1130	1220	1321	1499	1671	1796	2242
L (RF)	108	127	160	215,9	"	"	"	"	"	"	"	"	"	"	"	"	"	"	"
D	15	19	25	38	50	76	102	150	203	254	305	337	388	438	489	591	686	737	876
H	327	364	385	464	502	494	585	639	776	902	1008	1040	1294	1107	1294	1378	1492	1584	1787
M	250	250	350	400	700	457	457	610	762	914	762	762	762	762	914	914	914	914	914
Weight (Kg.) (BW)	8	10	13	25	27	42	88	186	355	630	929	1425	1910	2605	3125	4207	5801	6507	8237
Weight (Kg.) (RF)	10	12	16	29	30	46	93	206	395	675	979	1501	1995	-	-	-	-	-	-

CLASS 300 DIMENSIONS IN MILLIMETERS

ND.	1/2"	3/4"	1"	1 1/2"	2"	3"	4"	6"	8"	10"	12"
L (BW)	139,7	152,4	177,8	228,6	282,6	355,8	403,2	560,4	653,9	762	914,4
L (RF)	139,7	152,4	177,8	228,6	"	"	"	"	"	"	"
D	15	19	25	38	50	76	102	150	203	254	305
H	327	364	385	464	467	530	613	683	855	903	992
M	250	250	350	400	457	457	457	762	762	762	914
Weight (Kg.) (BW)	9	11	20	27	64	120	262	470	641	-	-
Weight (Kg.) (RF)	11	13	23	32	38	76	137	285	510	710	-



CLASS 900 DIMENSIONS IN MILLIMETERS

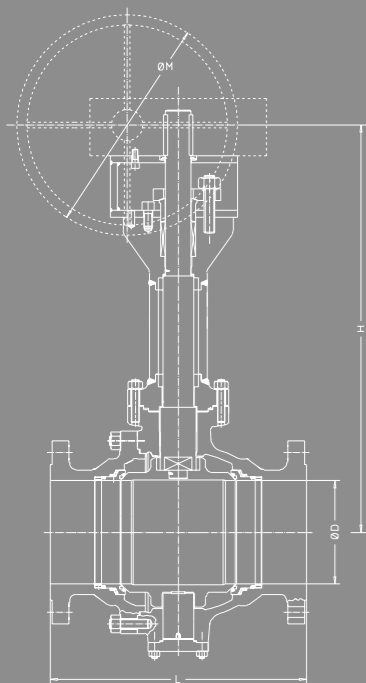
ND.	1/2"	3/4"	1"	1 1/2"	2"	3"	4"	6"	8"	10"	12"	16"
L (BW)	215,9	228,6	254	304,8	368,3	424,2	510,4	642,8	849,8	990	1168,4	1130,3
D	13	17	22	35	50	76	102	152	204	254	305	375
H	398	415	435	524	523	566	652	733	943	1022	1051	1328
M	350	500	650	800	457	610	762	914	914	762	914	914
Weight (Kg.) (BW)	17	27	31	47	76	131	230	404	715	1264	2245	3800
Weight (Kg.) (RF)	22	35	41	59	95	151	255	439	782	1349	2335	3905

CLASS 800 DIMENSIONS IN MILLIMETERS

ND.	1/2"	3/4"	1"	1 1/2"
L (BW)	139,7	152,4	165,1	190,5
L (RF)	108	127	160	215,9
D	15	19	25	38
H	327	364	385	464
M	250	250	350	400

CLASS 1500 DIMENSIONS IN MILLIMETERS

ND.	1/2"	3/4"	1"	1 1/2"	2"
L (BW)	215,9	228,6	254	304,8	368,3
D	13	17	22	35	50
H	398	415	435	524	557
M	350	500	650	800	457
Weight (Kg.) (BW)	17	27	31	47	76
Weight (Kg.) (RF)	22	35	41	59	95



CRYOGENIC BALL VALVES SPLIT BODY

Standards: API, BS, MSS, ANSI, ASME, ASTM
Classes: 150 lbs up to 2500 Lbs
Sizes: 1/2" up to 48"
Temperature: Down to -196°C

- Construction:**
- Extended bonnet (Gas column).
 - Bolted bonnet.
 - Floating and trunnion-mounted ball.
 - Full and reduced bore.
 - Flanged ends.
 - Manual and motor-operated.
 - Fire safe.
 - Soft seats.

CLASS 150 DIMENSIONS IN MILLIMETERS

ND.	1/2"	3/4"	1"	1 1/2"	2"	3"	4"	6"	8"	10"	12"	14"	16"	18"	20"	24"	26"	28"	30"
L (RF)	108	127	165,1	165,1	177,8	203,2	228,6	393,7	457,2	533,4	609,6	685,8	762	863,6	914,4	1066,8	1143	1244,6	1295,4
D	13	19	25	38	50	76	102	152	200	254	305	337	388	438	489	591	635	689	737
H	490	523	545	555	549	618	665	876	932	1104	1194	1232	1398	1449	1524	1775	1821	1691	1960
M	250	500	500	500	457	457	457	610	762	762	914	914	914	762	762	914	914	914	762
Weight (Kg)	12	15	18	24	36	52	72	260	356	590	986	1270	1360	1805	2630	3622	4005	4705	5540

CLASS 300 DIMENSIONS IN MILLIMETERS

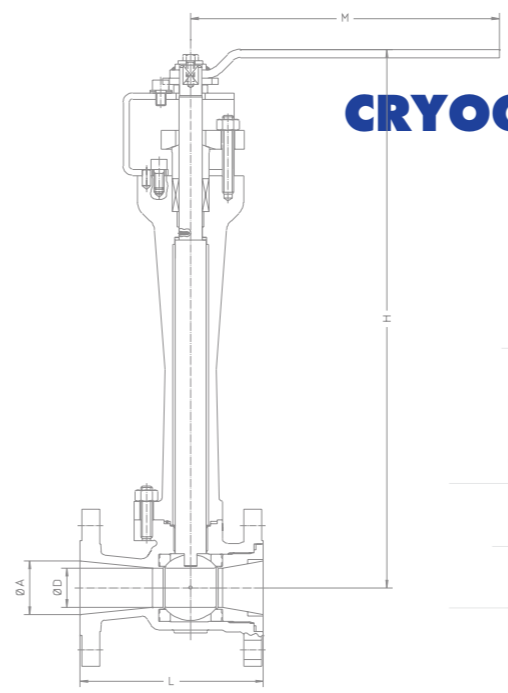
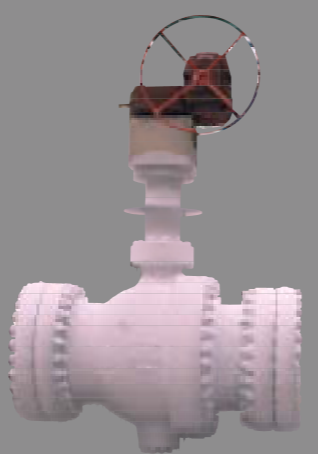
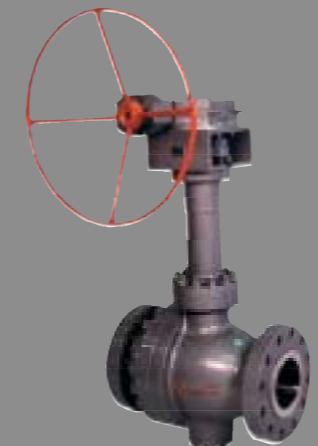
ND.	1/2"	3/4"	1"	1 1/2"	2"	3"	4"	6"	8"	10"	12"	14"	16"	18"	20"
L(RF)	139,7	152,4	165,1	190,5	215,9	282,6	304,8	403,2	501,7	568,3	647,6	762	838,2	914,4	990,6
D	13	20	25	38	50	76	102	152	200	254	305	337	388	438	489
H	510	506	546	549	551	618	755	876	932	404	1194	1232	1398	1449	1602
M	250	500	500	500	457	457	457	762	914	914	914	914	762	762	762
Weight (Kg)	14	16	19	26	39	56	112	275	360	760	1151	1367	1725	2355	2770

CLASS 600 DIMENSIONS IN MILLIMETERS

ND.	1/2"	3/4"	1"	1 1/2"	2"	3"	4"	6"	8"	10"	12"	14"	16"	18"	20"	24"
L(RF)	165,1	190,5	215,9	266,7	292,1	355,6	431,8	558,8	660,4	787,4	838,2	889	990,6	1092,2	1193,8	1397
D	15	20	25	38	50	76	102	152	204	254	305	337	388	438	489	591
H	426	506	556	602	654	678	855	948	1100	1186	1369	1442	1536	1611	1716	1825
M	250	500	500	500	457	457	610	762	914	914	762	914	762	762	914	914
Weight (Kg)	18	20	33	39	56	91	181	427	824	927	1457	1727	2325	2975	3415	5305

CLASS 900 DIMENSIONS IN MILLIMETERS

ND.	2"	3"	4"	6"	8"	10"	12"	14"	16"	18"
L(RF)	368,3	381	457,2	609,6	736,6	838,2	965,2	1009,7	1130,3	1219,2
D	50	76	102	152	204	254	305	325	375	425
H	739	771	966	1025	1098	1274	1570	1688	1797	1853
M	600	600	600	600	914	610	914	914	914	762
Weight (Kg)	112	127	136	564	815	1475	1605	1975	2728	3425



CRYOGENIC BALL VALVES END ENTRY

Standards: API, BS, MSS, ANSI, ASME, ASTM
Classes: 150 lbs up to 2500 Lbs
Sizes: 1/2" up to 48"
Temperature: Down to -196°C

- Construction:**
- Extended bonnet (Gas column).
 - Bolted bonnet.
 - Floating and trunnion-mounted ball.
 - Full and reduced bore.
 - Flanged ends.
 - Manual and motor-operated.
 - Fire safe.
 - Soft seats.



CLASS 150 DIMENSIONS IN MILLIMETERS

ND.	1/2"	3/4"	1"	1 1/2"	2"	3"	4"	6"
L(RF)	108	117,3	127	165,1	177,8	203,2	228,6	266,7
A	13	20	25	40	52	76	102	154
H	383	467	528,5	500	575	579	660	691
M	250	350	350	500	300	400	457	457
D	9,5	14	18	31	38	58	76	111
Weight(Kg)	6	7	8	14	22	25	64	91



CLASS 300 DIMENSIONS IN MILLIMETERS

ND.	1/2"	3/4"	1"	1 1/2"	2"	3"	4"	6"
D	9,5	14	18	31	38	58	76	102
L(RF)	139,7	152,4	165,1	190,5	215,9	282,6	304,8	403,2
A	13	20	25	40	52	76	102	152
H	383	467	529	500	575	581	660	682
M	250	350	350	350	300	550	457	457
Weight (Kg)	7	10	12	20	30	62	108	146



CLASS 600 DIMENSIONS IN MILLIMETERS

ND.	1/2"	3/4"	1"	1 1/2"	2"	3"
D	9,5	14	18	31	38	58
L(RF)	165,1	190,5	215,9	241,3	292,1	355,6
A	13	20	25	40	52	76
H	383	467	529	500	601	581
M	250	350	350	350	500	457
Weight (Kg)	8	11	14	22	31	78



CRYOGENIC GATE, GLOBE AND CHECK VALVES

GATE VALVES BOLTED BONNET

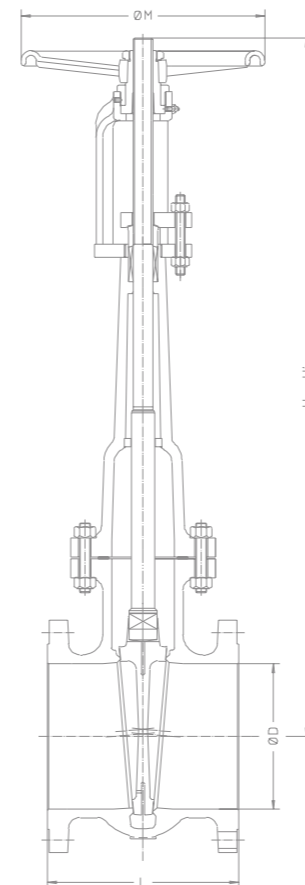
Also available in pressure seal

Standards: **API, BS, MSS, ANSI, ASME, ASTM**
 Classes: **150 lbs up to 2500 Lbs**
 Sizes: **2" up to 56"**
 Temperature: **Down to -196°C**

- Construction:
- Bolted bonnet.
 - Extended bonnet (gas column).
 - Flanged and butt weld ends.
 - Manual and motor-operated.
 - Throttling Service Globe valves.
 - Metal seats.

CLASS 150 DIMENSIONS IN MILIMETERS

ND.	3/4"	1"	2"	3"	4"	6"	8"	10"	12"	14"	16"	18"	20"	24"	30"	36"	40"	42"	48"
L (BW)	117,3	127	215,9	282,5	304,8	403,4	419,1	457,2	501,7	571,5	609,6	660,4	711,2	812,8	914,4	1016	-	-	-
L (RF)	117,3	127	177,8	203,2	228,6	266,7	292,1	330,2	355,6	762	406,4	431,8	457,2	508	609,6	711,2	813	813	914,4
D	19	25,5	52	76	102	152	203	254	305	335	387	432	489	584	737	881	989	1020	1168
H	506	555	576	707	796	1017	1185	1444	1993	2265	2549	2780	3004	3420	4200	4677	5657	5790	6302
H'	532	593	639	797	912	1181	1405	1722	-	-	-	-	-	-	-	-	-	-	-
M	160	225	225	225	275	325	380	380	400	700	500	500	800	800	600	900	900	800	1000
Weight (Kg) (BW)	14	20	25	35	40	84	132	210	302	455	607	722	920	1456	2146	3823	-	-	-
Weight (Kg) (RF)	16	22	29	42	50	96	148	229	335	492	676	810	1018	1550	2320	4005	5313	5370	7505



CLASS 300 DIMENSIONS IN MILIMETERS

ND.	3/4"	1 1/2"	2"	3"	4"	6"	8"	10"	12"	14"	16"	18"	20"	24"	26"	28"	30"	32"	36"
L (BW)	152,4	190,5	215,9	282,4	304,8	403,3	419,1	457,2	501,6	762	838,2	914,4	990,6	1143	1244,6	1346,2	1397	1524	1727,2
L (RF)	-	-	-	-	-	-	-	-	-	-	-	-	-	-	-	-	-	-	-
D	49	40	52	76	102	152	203	254	305	385	385	432	483	584	635	686	737	781	876
H	500	586	594	704	748	1055	1271	1875	1985	2265	2437	2794	2971	3420	4172	4172	4313	4313	5065
H'	528	638	654	788	862	1221	1488	-	-	-	-	-	-	-	-	-	-	-	-
M	160	225	225	225	275	380	380	500	500	700	700	700	700	800	800	800	900	900	1000
Weight (Kg) (BW)	16	25	30	36	55	110	174	359	529	835	1037	1362	1820	2907	3516	4206	4379	4985	6759
Weight (Kg) (RF)	19	29	34	44	66	126	191	380	566	880	1112	1442	1905	3002	3627	4332	4525	5127	6920

CLASS 600 DIMENSIONS IN MILIMETERS

ND.	1"	2"	3"	4"	6"	8"	10"	12"	14"	16"	18"	20"	24"	26"	28"	30"
L (BW)	216	292,1	355,6	431,8	558,8	660,4	787,4	838,2	889	990,6	1092,2	1193,8	1397	1447,8	1549,4	1651
L (RF)	-	-	-	-	-	-	-	-	-	-	-	-	-	-	-	-
D	25	52	76	102	152	203	248	298	327	375	419	464	559	605	650	700
H	508	627	778	887	1141	1545	1916	2008	2302	2477	2695	3040	3469	3829	3829	4274
H'	543	690	866	1001	1314	-	-	-	-	-	-	-	-	-	-	-
M	225	325	325	380	500	600	800	600	700	800	800	800	900	1000	1000	1000
Weight (Kg) (BW)	28	45	63	136	312	478	795	1072	1242	1857	2448	2984	4051	5395	7568	8333
Weight (Kg) (RF)	33	51	72	155	330	510	820	1110	1315	1992	2597	3186	4290	5680	7970	8702



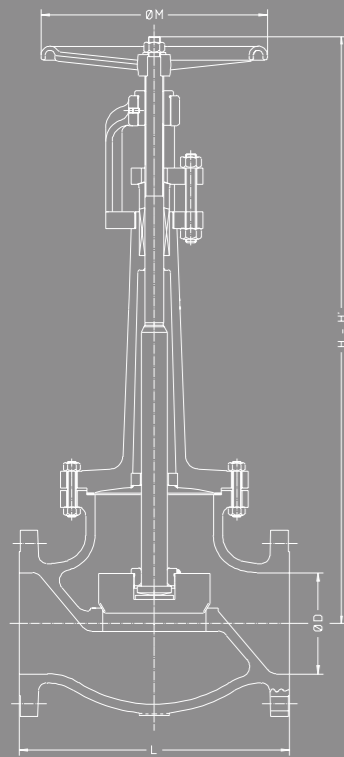
CLASS 900 DIMENSIONS IN MILIMETERS - HIGH PRESSURE / PRESSURE SEAL

ND.	1/2"	3/4"	1"	1 1/2"	2"	3"	4"	6"	8"	10"	12"	14"	16"	18"	20"	24"
L (BW)	165,1	190,5	215,9	241,3	368,3	381	457,2	609,6	736,6	787,4	965,2	1028,7	1130,3	1219,2	1320,8	1397
L (RF)	-	-	-	-	-	-	-	-	-	-	-	-	-	-	-	-
D	13	19	25	32	48	76	102	147	191	248	283	311	356	400	445	533
H	604	715	725	743	773	861	1040	1482	1737	1929	2225	2464	2557	2793	2947	3153
H'	632	746	762	792	835	951	1165	-	-	-	-	-	-	-	-	-
M	160	225	225	225	325	380	380	500	500	600	700	700	800	700	700	800
Weight (Kg) BW	24	30	38	48	59	103	171	340	565	1185	1407	1812	2180	3605	5226	7342
Weight (Kg) RF	28	35	44	55	69	126	192	371	602	1225	1463	1878	2405	3915	5622	7805



CLASS 1500 DIMENSIONS IN MILIMETERS - HIGH PRESSURE / PRESSURE SEAL

ND.	2"	3"	4"	6"	8"	10"	12"
L (BW)	368,3	469,9	546,1	704,9	831,9	990,6	1130,3
L (RF)	-	-	-	-	-	-	-
D	48	70	92	137	178	222	264
H	773	881	1181	1503	1709	1931	2216
H'	835	967	-	-	-	-	-
M	325	380	500	700	700	600	600
Weight (Kg) BW	78	157	259	541	1107	2052	3185
Weight (Kg) RF	89	205	309	602	1192	2177	3305



GLOBE VALVES BÖLTED BONNET

Also available in pressure seal

Standards: **API, BS, MSS, ANSI, ASME, ASTM**
 Classes: **150 lbs up to 2500 Lbs**
 Sizes: **2" up to 56"**
 Temperature: **Down to -196°C**

- Construction:
- Bolted bonnet.
 - Extended bonnet (gas column).
 - Flanged and butt weld ends.
 - Manual and motor-operated.
 - Throttling Service Globe valves.
 - Metal seats.

CLASS 150 DIMENSIONS IN MILIMETERS

ND.	1/2"	3/4"	1"	1 1/2"	2"	3"	4"	6"	8"	10"	12"	14"	16"	18"	20"	24"
L (BW)	107,9	117,5	127	165,1	203,2	241,3	292,1	406,4	495,3	622,3	698,5	787,4	914,4	1041,4	1168,4	1295,4
L(RF)	"	"	"	"	"	"	"	"	"	"	"	"	"	"	"	"
D	13	19	25	38	52	76	102	152	203	254	305	336	387	432	489	590
H	497	508	522	616	619	720	797	1263	1192	1452	1598	1760	1919	2134	2359	2575
H'	507	518	533	631	655	750	833	-	-	-	-	-	-	-	-	-
M	160	160	160	200	225	325	325	500	500	500	600	600	600	800	800	1000
Weight (Kg) BW	6	10	16	18	23	38	61	144	172	204	387	515	705	-	-	-
Weight (Kg) RF	7	11	20	23	27	49	73	160	190	236	420	561	772	-	-	-

CLASS 300 DIMENSIONS IN MILIMETERS

ND.	1/2"	3/4"	1"	1 1/2"	2"	3"	4"	6"	8"	10"	12"	14"	16"
L (BW)	152,4	177,8	203,2	228,6	266,7	317,5	355,6	444,5	558,8	622,3	711,2	787,4	914,4
L(RF)	"	"	"	"	"	"	"	"	"	"	"	"	"
D	13	19	25	38	52	76	102	152	203	254	304	336	387
H	490	536	530	616	637	790	828	1261	1436	1550	1725	2000	2305
H'	500	547	541	631	659	820	866	-	-	-	-	-	-
M	160	160	160	200	225	325	325	500	600	700	700	700	800
Weight (Kg) BW	9	11	16	21	34	57	97	151	252	347	581	812	917
Weight (Kg) RF	11	14	19	26	40	65	110	174	286	388	620	886	1025

CLASS 600 DIMENSIONS IN MILIMETERS

ND.	1/2"	3/4"	1"	1 1/2"	2"	3"	4"	6"	8"	10"	12"
L (BW)	165,1	190,5	215,9	241,3	292,1	355,6	431,8	558,8	660,5	787,4	838,2
L(RF)	"	"	"	"	"	"	"	"	"	"	"
D	13	19	25	38	52	76	102	152	200	248	298
H	510	551	554	616	677	823	1017	1377	1432	1671	1882
H'	521	566	565	631	700	853	-	-	-	-	-
M	160	160	200	200	225	325	500	500	500	800	800
Weight (Kg) BW	12	16	18	22	45	72	171	251	481	817	870
Weight (Kg) RF	14	19	22	27	50	79	190	277	526	862	905



CLASS 900 DIMENSIONS IN MILIMETERS

ND.	2"	3"	4"	6"	8"	10"	12"
L (BW)	368,3	381	457,2	609,6	736,6	838,2	965,2
L(RF)	"	"	"	"	"	"	"
D	48	76	98	146	190	238	283
H	854	929	1192	1528	1636	1762	1923
H'	877	969	-	-	-	-	-
M	325	325	400	700	800	1000	1000
Weight (Kg) BW	78	142	250	342	970	1560	1872
Weight (Kg) RF	85	157	272	369	1045	1647	1991

CLASS 1500 DIMENSIONS IN MILIMETERS - HIGH PRESSURE / PRESSURE SEAL

ND.	2"	3"	4"	6"	8"	10"	12"
L (BW)	368,3	469,9	546,1	704,9	831,9	990,6	1130,3
L(RF)	"	"	"	"	"	"	"
D	48	73	92	137	178	222	264
H	854	1289	1344	1653	1715	1901	2123
H'	877	-	-	-	-	-	-
M	325	600	600	900	1000	1000	1000
Weight (Kg) BW	78	162	371	622	1172	2220	2677
Weight (Kg) RF	85	181	407	641	1261	2335	2815



The best human team and a fully in-house integrated process enable us to offer top design and manufacturing of cryogenic valves.

TOTAL RELIABILITY IN THE MOST SEVERE CONDITIONS

Poyam Valves is the world's leader in design & manufacturing of cryogenic ball, gate, globe and check valves. Our valves are produced by highly qualified, motivated and experienced professionals offering a high quality product suitable to obtain high performance in the most severe conditions.

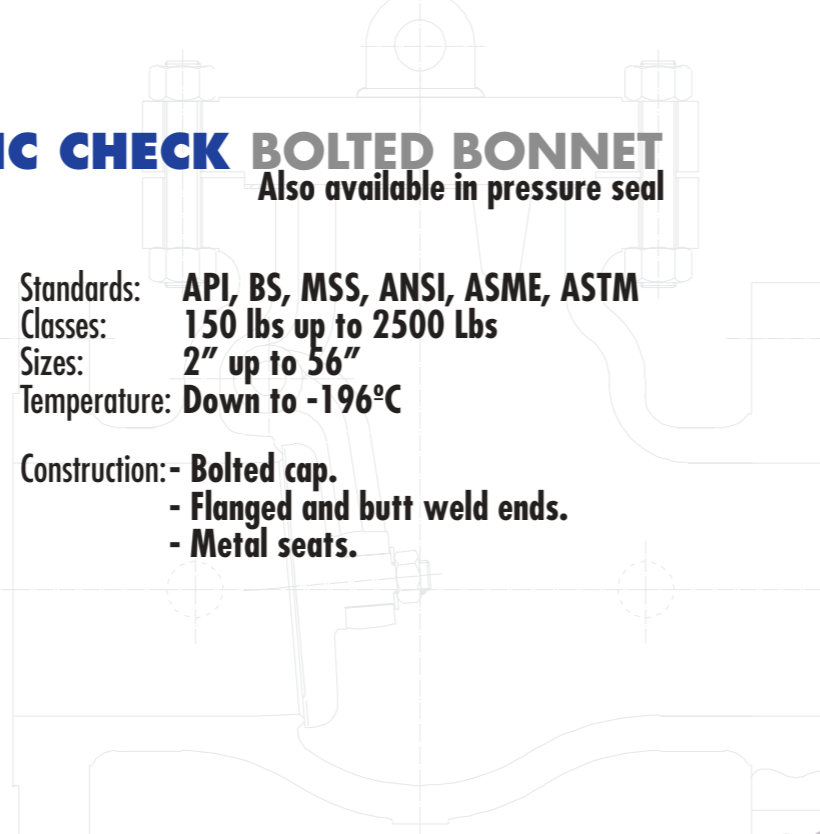
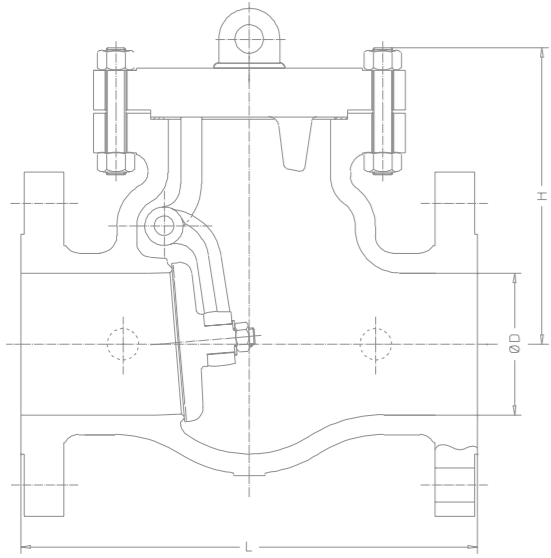


CRYOGENIC CHECK BOLTED BONNET

Also available in pressure seal

Standards: **API, BS, MSS, ANSI, ASME, ASTM**
 Classes: **150 lbs up to 2500 Lbs**
 Sizes: **2" up to 56"**
 Temperature: **Down to -196°C**

Construction: - Bolted cap.
 - Flanged and butt weld ends.
 - Metal seats.



CLASS 1500 DIMENSIONS IN MILLIMETERS

ND.	1/2"	3/4"	1"	1 1/2"	2"	3"	4"	6"	8"	10"	12"
L (BW)	215,9	228,6	254	304,8	368,3	469,9	546,1	704,9	831,9	990,6	1130,3
L(RF)	"	"	"	"	"	"	"	"	"	"	"
D	13	18	25	35	48	70	92	137	178	222	264
H	113	118	122	167	237	296	342	469	553	643	755
Weight (Kg) BW	18	20	25	36	66	117	182	409	662	1308	2192
Weight (Kg) RF	23	26	31	42	74	135	226	515	898	1588	2497

CLASS 2500 DIMENSIONS IN MILLIMETERS

ND.	1/2"	3/4"	1"	1 1/2"	2"	3"	4"	6"
L (BW)	263,6	273	307,8	384	450,9	577,9	673,1	914,4
L(RF)	"	"	"	"	"	"	"	"
D	11	15	19	34	52	57	73	111
H	140	147	164	217	290	366	426	582
Weight (Kg) BW	25	38	48	57	89	202	307	528
Weight (Kg) RF	32	43	54	65	110	224	331	619

CLASS 150 DIMENSIONS IN MILLIMETERS

ND.	1/2"	3/4"	1"	1 1/2"	2"	3"	4"	6"	8"	10"	12"	14"	16"	18"	20"	24"	30"
L (BW)	108	177,3	127	165,1	203,2	241,3	292,1	355,6	495,3	622,3	698,5	787,4	863,6	977,9	977,9	1295,4	1524
L(RF)	"	"	"	"	"	"	"	"	"	"	"	"	"	"	"	"	"
D	15	20	25	38	52	76	102	152	203	254	305	335	387	438	489	590	737
H	105	108	112	126	143	186	210	247	304	331	410	459	499	552	572	670	800
Weight (Kg) BW	8	9	10	11	13	20	30	63	114	196	271	423	519	590	733	1324	2240
Weight (Kg) RF	10	11	12	13	16	27	43	71	128	232	326	460	576	660	808	1404	2330

CLASS 300 DIMENSIONS IN MILLIMETERS

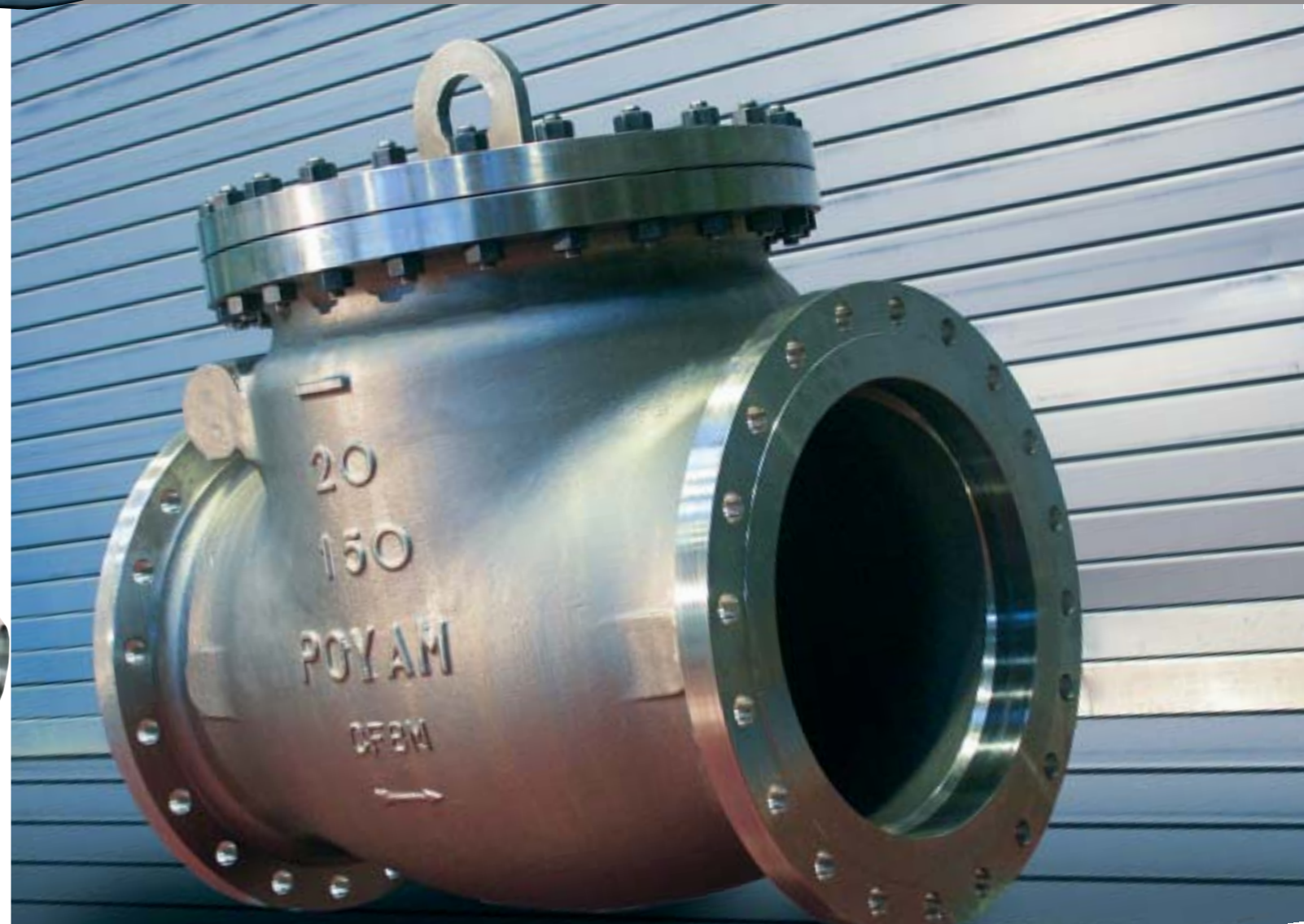
ND.	1/2"	3/4"	1"	1 1/2"	2"	3"	4"	6"	8"	10"	12"	14"	16"	18"	20"	24"	30"
L (BW)	152,4	177,8	215,9	241,3	266,7	317,5	355,6	444,5	533,4	622,3	711,2	838,2	863,6	978	1016	1346,2	1593,9
L(RF)	"	"	"	"	"	"	"	"	"	"	"	"	"	"	"	"	"
D	15	20	28	38	52	76	102	152	203	254	304	335	387	432	483	584	737
H	105	108	112	134	152	184	222	275	328	392	451	487	552	591	622	721	860
Weight (Kg) BW	9	10	11	12	17	30	42	92	150	265	327	532	727	1030	1127	1933	3005
Weight (Kg) RF	11	12	13	14	24	46	62	125	220	320	446	612	572	1150	1252	2063	3150

CLASS 600 DIMENSIONS IN MILLIMETERS

ND.	1/2"	3/4"	1"	1 1/2"	2"	3"	4"	6"	8"	10"	12"	14"	16"	18"	20"	24"	28"	30"
L (BW)	165,1	190,5	215,9	241,3	292,1	355,6	431,8	558,8	660,4	787,4	838,2	889	990,6	1092,2	1193,8	1397	1600	2165,1
L(RF)	"	"	"	"	"	"	"	"	"	"	"	"	"	"	"	"	"	"
D	15	20	26	38	52	76	101	152	203	248	298	327	375	419	489	559	695	695
H	13	118	122	136	198	217	279	366	424	522	564	593	624	705	784	839	1088	1088
Weight (Kg) BW	11	12	13	20	26	44	78	162	310	508	705	972	1365	1550	2371	2960	-	5615
Weight (Kg) RF	13	14	16	24	32	60	103	202	335	622	830	1107	1505	1903	2696	3307	-	5790

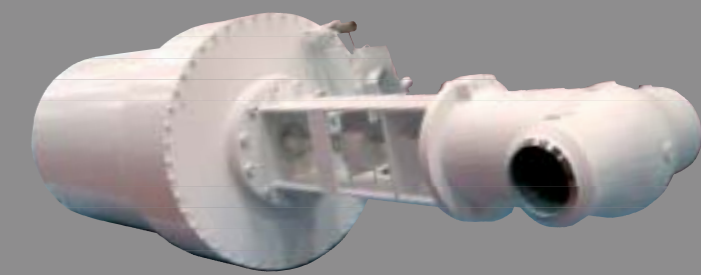
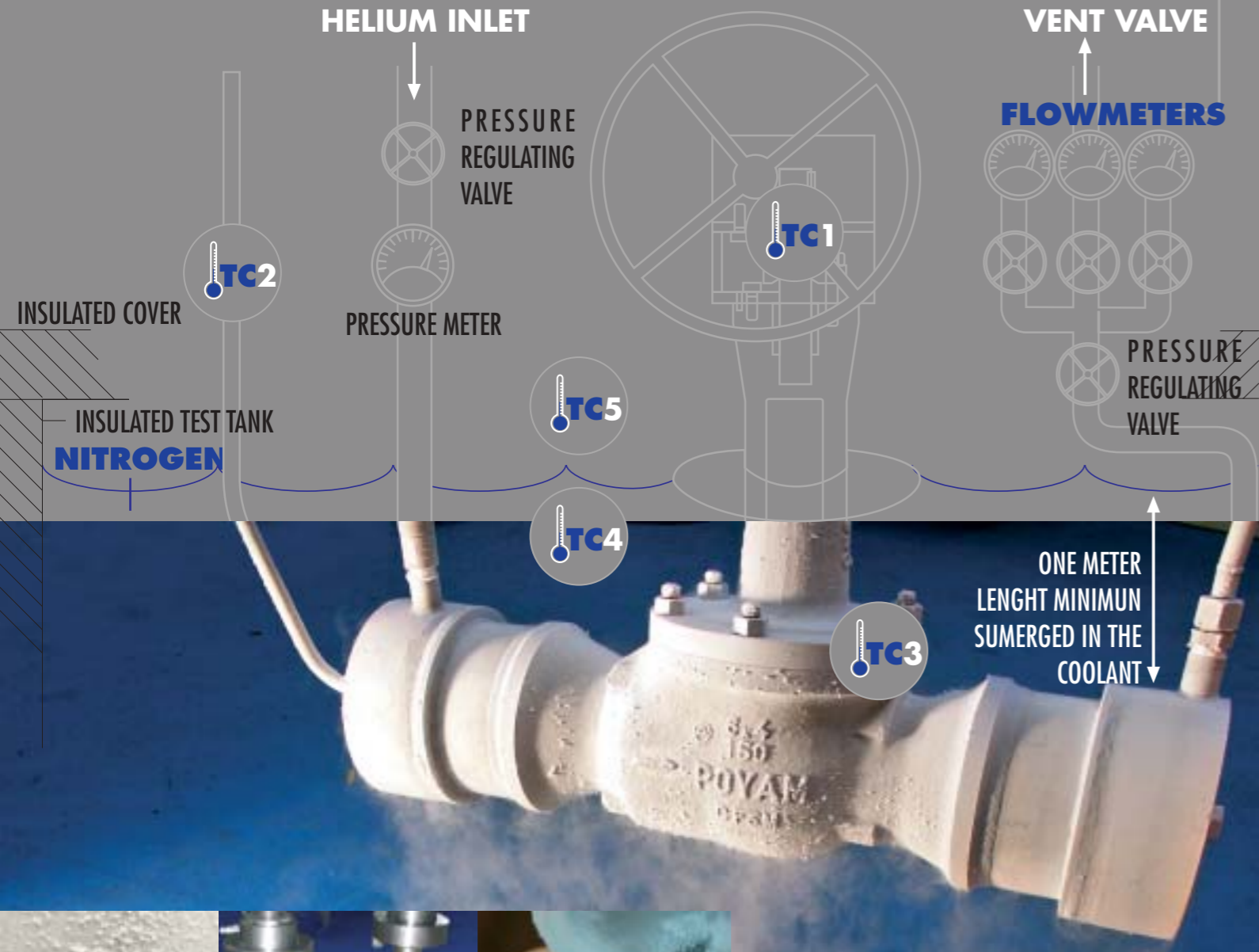
CLASS 900 DIMENSIONS IN MILLIMETERS

ND.	1/2"	3/4"	1"	1 1/2"	2"	3"	4"	6"	8"	10"	12"	14"	16"
L (BW)	215,9	228,6	254	304,8	368,3	381	457,2	609,6	736,6	838,2	965,2	1028,7	1130,3
L(RF)	"	"	"	"	"	"	"	"	"	"	"	"	"
D	13	18	25	35	50	73	102	147	191	238	283	311	356
H	113	118	122	167	237	265	317	402	474	557	597	640	678
Weight (Kg) BW	18	20	25	36	66	79	128	241	470	760	1202	1417	1708
Weight (Kg) RF	23	26	31	42	74	94	158	302	505	880	1360	1742	2089



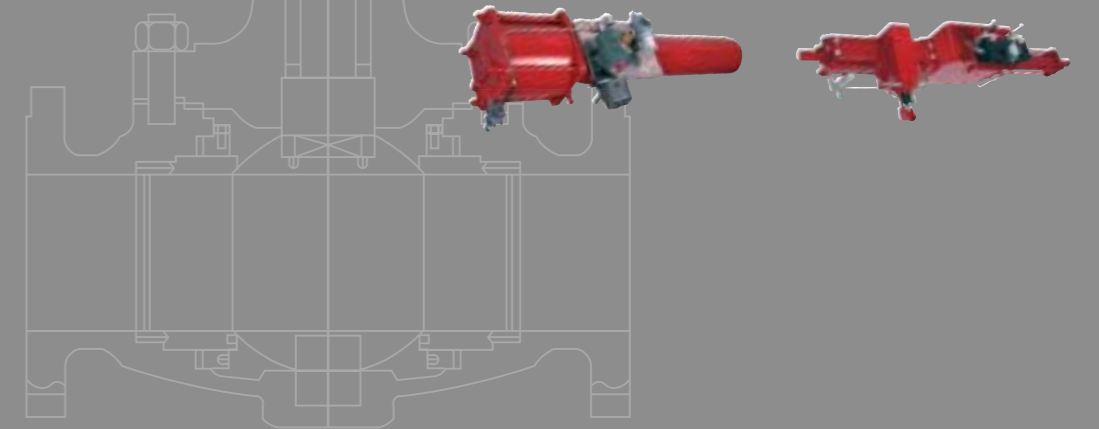
CRYOGENIC TEST INSTALATION

- TC TEMPERATURE RECORDER**
TC1 BONNET (STUFFING BOX AREA) **TC2** CLOSURE MEMBER (BALL) **TC3** VALVE BODY (OUTSIDE)
TC4 COOLANT (TANK TEMPERATURE) **TC5** ROOM TEMPERATURE



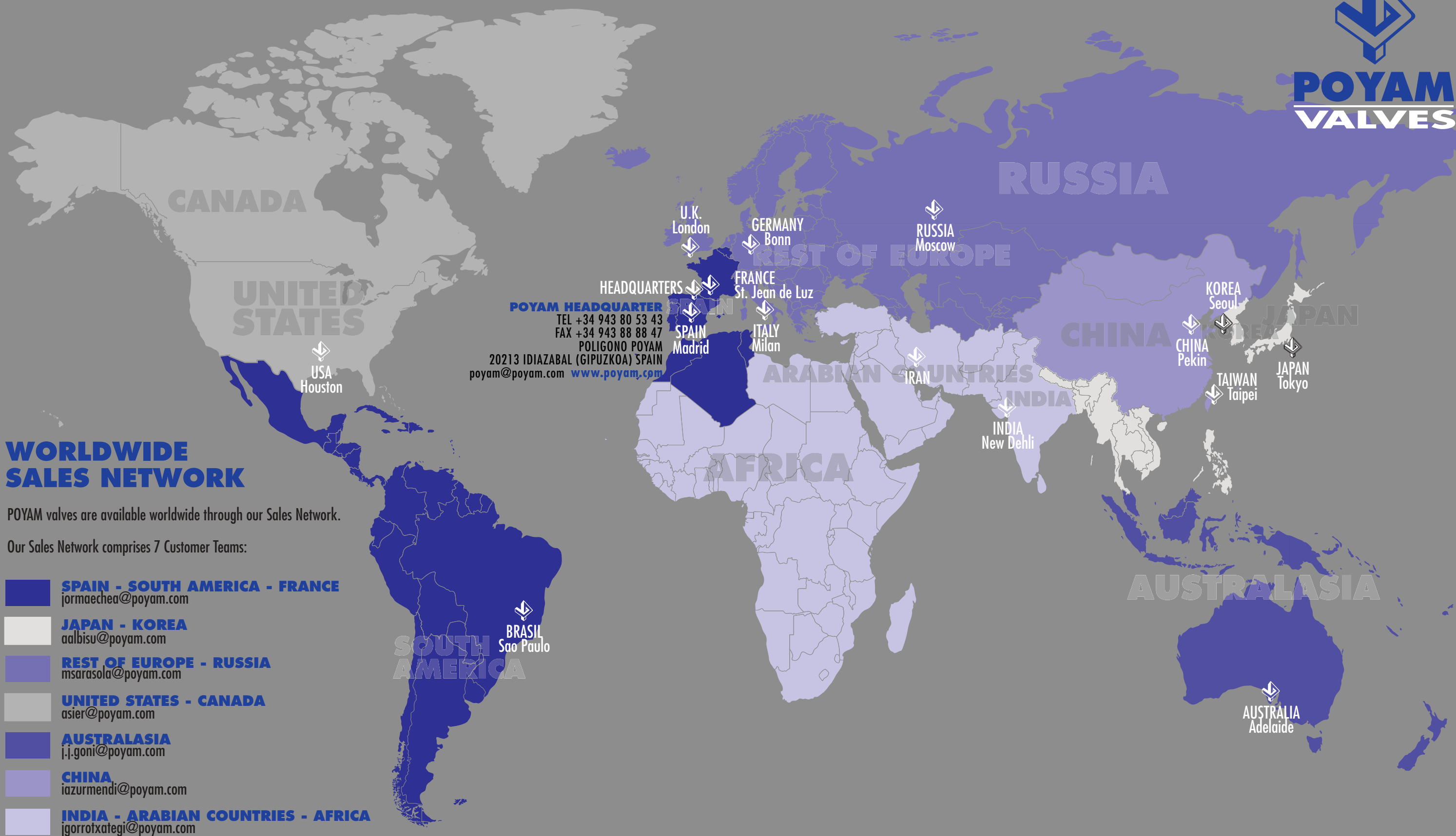
ACTUATORS AND CONTROL

Electric Actuators - Pneumatic Actuators - Hydraulic Actuators. - Manual Gear Box, side-mounted hand wheel - Positioner for control service - Interlocks - Limit Switches





POYAM
VALVES



POYAM VALVES is situated in Idiazabal, a town in the north of Spain, in an area with a deeply-rooted industrial tradition called THE BASQUE COUNTRY. Idiazabal is just 1 hour's drive from BILBAO (International Airport) and at these distances from other important places:
90 km east of Bilbao, 45 km south of San Sebastian, 70 km south of the French border.

www.poyam.com

www.poyam.com



*POYAM IS THE WORLDS LEADING
MANUFACTURER OF CRYOGENIC
BALL, GATE, GLOBE AND CHECK
VALVES.*



ATTENTION AND SERVICE

At POYAM we share customer aspirations, as only in their triumph lies our success.

POYAM VALVES is the most efficient partnership at each stage of your project, we have more than 35 years' experience worldwide supplying high-tech, quality products and best service.



*"IN TUNE WITH CUSTOMERS,
BECAUSE CUSTOMER SATISFACTION
IS POYAM SATISFACTION"*

